



MORE THAN JUST ENGINEERING

DIGITAL CONSULTANCY , ENGINEERING,  
OUTSOURCING AND ARCHITECTURE

# COMPANY OVERVIEW

JANUARY-2023

ideaingenieria.es  
comercial@ideaingenieria.es





# GENERAL INDEX

- 01\_ ABOUT IDEA >>>**
- 02\_ BIM >>>**
- 03\_ SECTORS >>>**
- 04\_ IDEA GREEN >>>**
- 05\_ SERVICES >>>**
- 06\_ IDEATEAMS >>>**
- 07\_ IDEA IN NUMBERS >>>**
- 08\_ CONTACT >>>**



# IDEA GROUP

IS CURRENTLY INTEGRATED BY 4 COMPANIES:



**IDEA** +230

PEOPLE

Multidisciplinary Engineering company specialized in **BIM** and in the use of the latest Digital Enablers.

**IA** MANUFACTURING

**IA MANUFACTURING**

+5  
PEOPLE

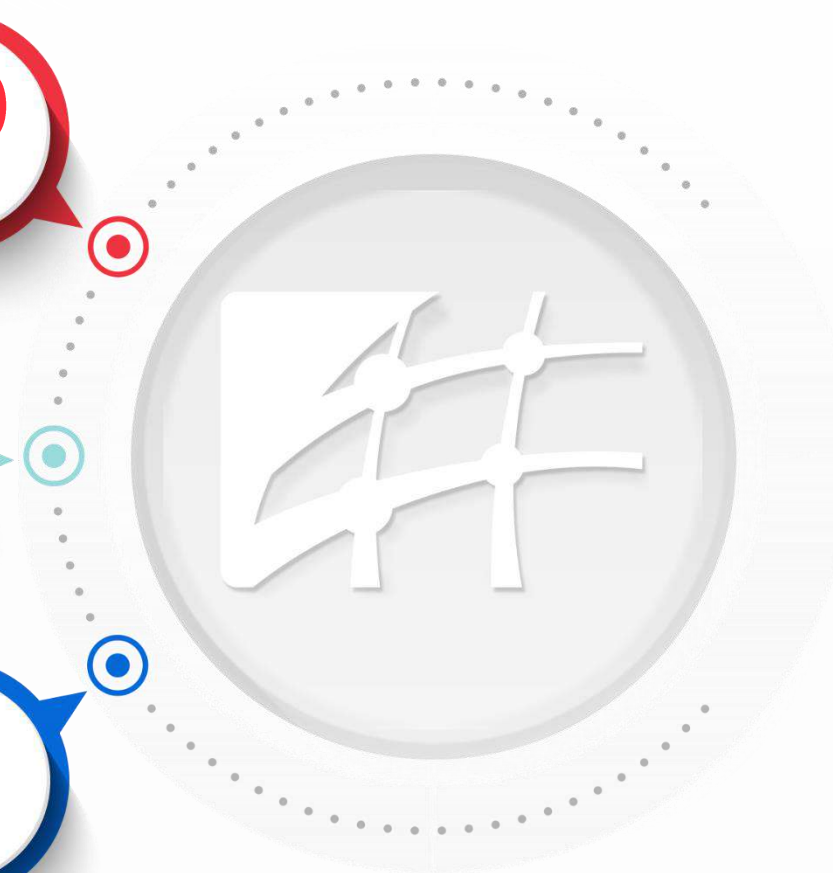
Company specialized in Additive Manufacturing.

**DRONICA**

**DRONICA**

+5  
PEOPLE

Technological company specialized in Laser, Scanner and Drones.



## 01. ABOUT IDEA



### Mission, Vision and Values

## DIGITAL CONSULTING, ENGINEERING, OUTSOURCING AND ARCHITECTURE: “THE PERFECT COMBINATION”

**IDEA** was formed in 2008, specializing in the deployment of BIM methodology in industrial projects.

It was formed by a team of professionals of over 230 people, seeking professional and human development as well as the best customer service.

The perfection and quality of our services has allowed us to collaborate in a large number of international projects (over 26 countries) with the outstanding companies in the sector.



### MISSION

Our Mission is to provide our customers with value proposals in their innovation strategy through the digitalization/digital transformation of their company.

### VISION

IDEA's vision is to become the national Leader and to be internationally recognized as an Engineering company in the 4.0 INDUSTRY.

### VALUES

Empathy to achieve customer's maximum satisfaction, by providing innovative solutions through:

- › Teamwork, with fellowship and humanity.
- › Motivation in the search of the 4.0 Engineer.
- › Innovative creativity.
- › Zero error.
- › Environmental Care Attitude.





## 01. ABOUT IDEA



### Evolution



**+15**

YEARS



**+26**

COUNTRIES



**+900**

PROJECTS



**+12**

M/€



**+230**

PEOPLE

## PRESENCE IN **+26 COUNTRIES**

ANDORRA, ALGERIA,  
AUSTRALIA, BANGLADESH,  
BELGIUM, COLOMBIA, BRAZIL,  
CANADA, CHILE, CHINA, ARAB  
EMIRATES, SPAIN, FRANCE,  
GIBRALTAR, GUINEA-CONAKRY,  
IRAN, KUWAIT, MOROCCO,  
MAURITANIA, MEXICO,  
NIGERIA, NORWAY, PERU,  
PORTUGAL, RUSSIA, SOUTH  
AFRICA, UK ...



## 01. ABOUT IDEA

Our customers

**+150 CUSTOMERS HAVE TRUSTED US**

INERCO

TECNICAS REUNIDAS

Technip

سابك  
sabik

REPSOL

Navantia

MARTIFER  
GROUP

endesa

TAIMWESER

ILBOC

IBERDROLA

GHESA

ferrovial

euroestudios

enagas

Air Liquide

sertego

DRAGADOS

EIFFAGE  
ENERGIA

COPISA

COFELY  
GDF SUEZ

exolum

CEPSA

NIPPON  
GASES

Z  
ZETA

ABENGOA

accenture

amec  
foster  
wheeler

LKS

sacyr  
INDUSTRIAL

TSK

Fini





## 02. BIM - OUR DNA



### +11 YEARS OF EXPERIENCE IN BIM

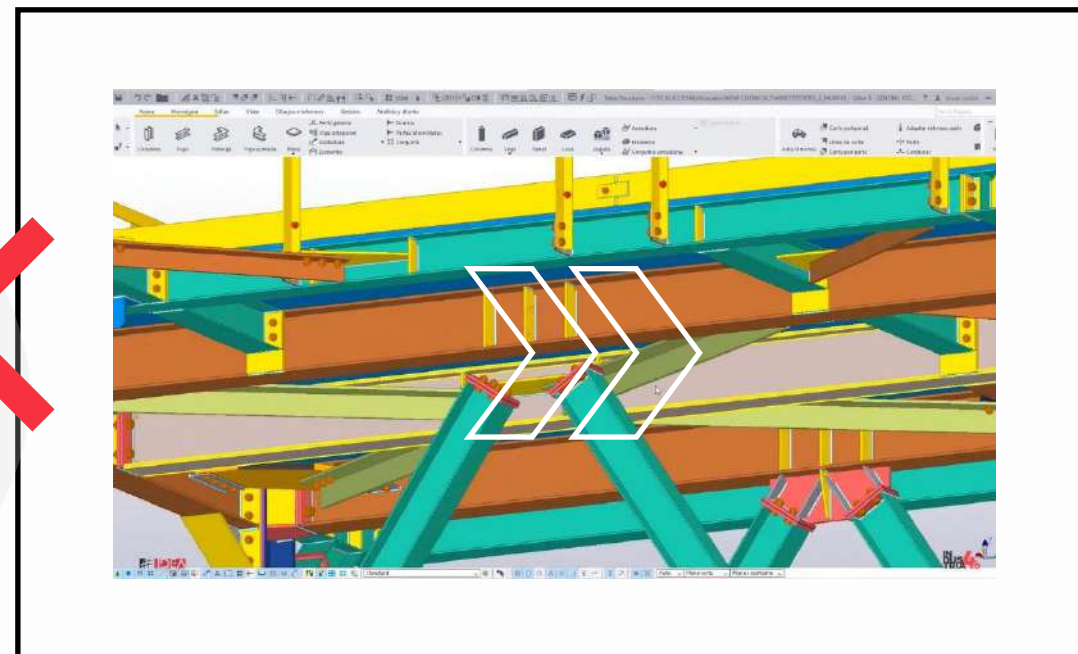
BIM, THE CHANNEL WHERE THE RELATIONSHIP BETWEEN ARCHITECTURE AND ENGINEERING FINALLY MAKES SENSE.



## BIM

BIM works with constructive models with the ultimate objective to centralize all information in a single model.

Thus, a saving of time and an optimisation of the process is achieved, which is evidenced in a higher profitability and quality of the project.



### 03. SECTORS



Professionalism and experience in the main fields.



INDUSTRIAL



OIL&GAS



MINING



EDIFICATION&URBANISM



RENEWABLE ENERGY





## 04. IDEA GREEN

# IDEA GREEN

has 5 services focused on the development of sustainable and environmentally friendly projects:

**MORE INFO HERE**

**GREEN  
HYDROGEN**



**SUSTAINABLE  
MOBILITY**



**PHOTOVOLTAIC  
SOLAR ENERGY**



**SUSTAINABLE  
ARCHITECTURE**



**ENERGETIC  
EFFICIENCY**



**“OUR HEART BEATS IN RED**

**WE ACT IN GREEN”**





#### MAJOR PLANT OF GREEN HYDROGEN IN EUROPE

##### O&G SPECIALIST ENGINEERING

SPAIN | PUERTOLLANO | CIUDAD REAL | 2021-

✓ CLIENT: IBERDROLA

✓ PROJECT:

**ICONSA**, a member company of IDEA, has been the bidder regarding the development of the basic engineering activities and detailed ones for the safety valve discharge systems and flare for H<sub>2</sub> currents and reception, compression and delivery of O<sub>2</sub>.

The plant will achieve high-purity hydrogen and oxygen production through polymer electrolysis, with a production capacity of around 720 tH<sub>2</sub>/year of hydrogen and 5.800 tO<sub>2</sub>/year of oxygen and will be based on the technology de NEL's 20 MW Proton Exchange Membrane (PEM).

##### H<sub>2</sub> INJECTION REGASIFICATION PLANT

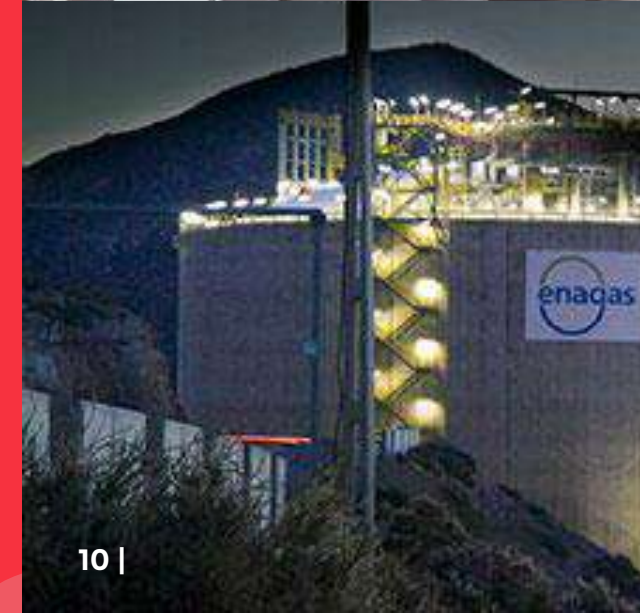
SPAIN | REGION OF MURCIA | CARTAGENA | 2018

✓ CLIENT: ENAGÁS

✓ PROJECT

The pilot project for the injection of hydrogen into the local network of Cartagena aims to be a pioneering activity in Spain for the injection of H<sub>2</sub> into the gas network.

For the development of the project, the constitution of a consortium together with the Foundation for the Development of New Hydrogen Technologies in Aragon (FHa) and Hydrogen has been considered. Being IDEA Engineering the one in charge of the development of the Construction Project that will make this pioneering investment in Spain a reality.





## 04. IDEA GREEN

### FEATURED PROJECTS



#### 10,5 MW PHOTOVOLTAIC GREENHOUSE

FRANCE | 2012

- ✓ INVESTMENT: 10 M€
- ✓ CLIENT: BESTER GENERACIÓN
- ✓ PROMOTER: BESTER GENERACIÓN
- ✓ DATA OF INTEREST: POTENCIAL 10,5 MW

Isstres Plant, Fixed structure of galvanized Steel  
COLLABORATION WITH RDS GROUP

#### 10 MW THERMAL PLANT

SPAIN, SEVILLA | 2012

- ✓ INVESTMENT: 8,7 M€
- ✓ CLIENT: Grupo AMS (Aldesa)
- ✓ PROMOTER: Grupo AMS (Aldesa)
- ✓ DATA OF INTEREST: POTENCIAL 10 MW

Mirror Plant. Fixed structure of galvanized steel.

COLLABORATION WITH RDS GROUP

#### 800 KW SOLAR PLANT

SPAIN, ALMERIA | 2008

- ✓ FERVA PLANT
- ✓ POWER 800 KW
- ✓ ALUMINIUM FIXED STRUCTURE

#### 500 KW SOLAR PLANT

SPAIN, ALMERIA | 2010

- ✓ VICAR PLANT
- ✓ POWER 500 KW
- ✓ FIXED STRUCTURE OF GALVANIZED STEEL AND ALUMINIUM

Associated partner:  **RDS**





## 05. SERVICES



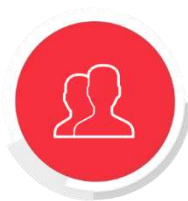
### PROJECT ENGINEERING

IDEA renders multidisciplinary engineering services for the development of industrial projects, based on BIM Methodology usage.



### TURN-KEY PROJECTS (EPC-INTELLIGENT)

IDEA carries out Project Management using management processes for design control, procurement, intelligent construction and commissioning.



### RECRUITMENT & OUTSOURCING

IDEA offers the R&O service as an extra resource that provides you with successful solutions for hiring professionals.



### DIGITAL TRANSFORMATION 4.0

IDEA provides the latest technology for the complete digitalization of the industrial environments;

- Design phases
- Operating
- Maintenance.



### ARCHITECTURE

IDEA invests on an architecture based on the uniqueness, avoiding the standardized and impersonal spaces.



### GRIDS

IDEA has a wide experience in the installation of power distribution systems, telecommunications networks and renewable energies.





## 05. SERVICES

### 05.1. PROJECT ENGINEERING



## PROJECT ENGINEERING

**IDEA** offers multidisciplinary engineering services for the development of industrial projects, based on the use of BIM Technology.

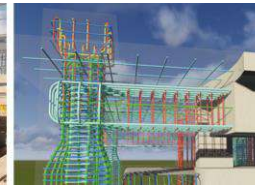
Design optimisation with the use of 3D simulation tools in such a way that the process is sequenced:

- Design
- Engineering
- Project
- Manufacturing
- Construction
- Maintenance
- Exploitation

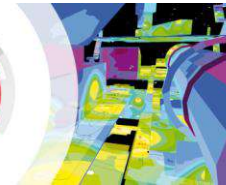
#### CIVIL



#### NAVEC



#### ELECTRICITY



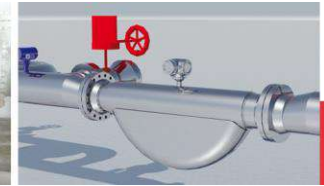
#### COPISA

#### MECHANICAL



#### SERTEGO

#### I&C



#### ZETA GAS

#### PIPING



#### ZETA GAS

#### PROCESS



#### ENAEX



## 05.1 SERVICES - ENGINEERING

### FEATURED PROJECTS



#### PLANTA GLP

OIL & GAS | STORAGE AND GNL/GLP DISTRIBUTION PLANT

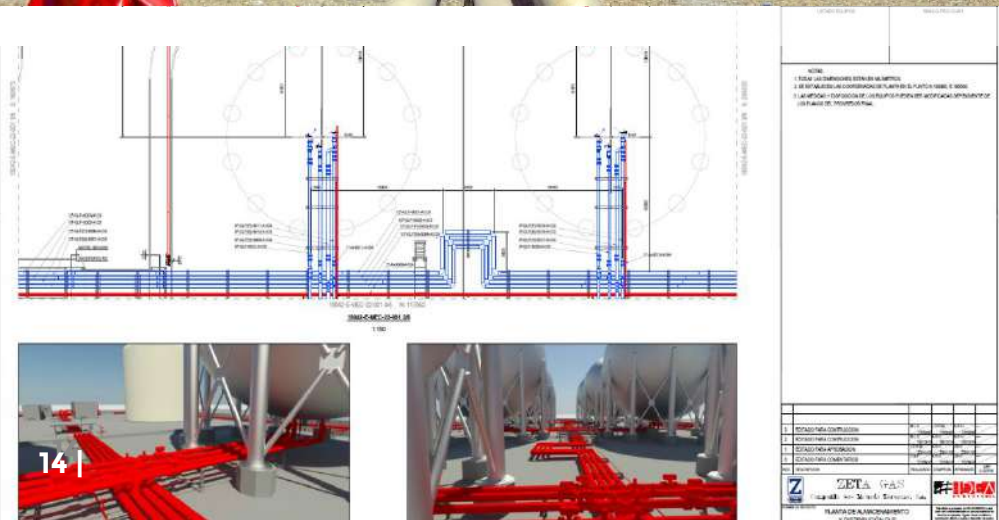
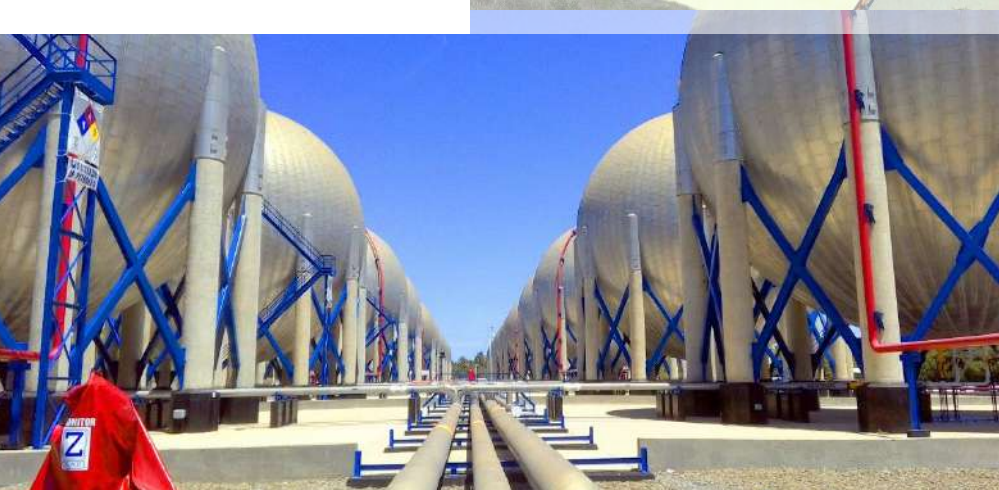
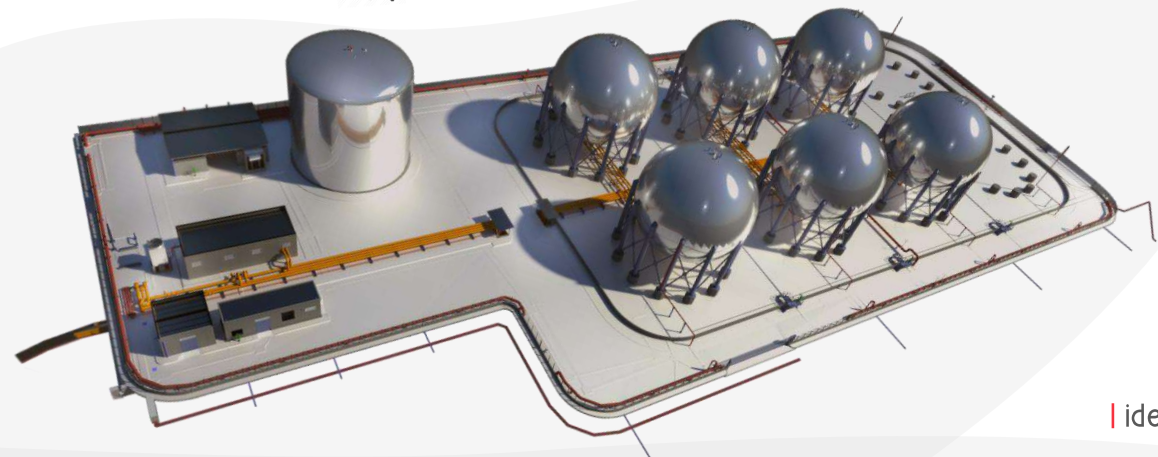
SPAIN, Murcia | 2015- 2019

- ✓ INVESTMENT: + 70 M€
- ✓ CLIENT: **COMPANY OF LIQUID GAS ZARAGOZA S.A.**
- ✓ PROMOTER: COMPANY OF LIQUID GAS ZARAGOZA S.A
- ✓ DATA OF INTEREST:

#### MULTIDISCIPLINARY PROJECT

- Basic project and execution of public works engineering.
- Detailed Engineering Project for: Civil installations, Electrical, Instrumentation & Control, Mechanics&Piping and Processes.
- Legalization Projects.
- Realization of Hazop studies.
- Preparation of Documentation of Security Against Explosives (ATEX).
- Requisition and purchase specifications, request for offers and comparison.

**MORE INFO HERE**





## 05.1 ENGINEERING PROJECT HIGHLIGHTS



### IRON MINE

MINING | HANDLING

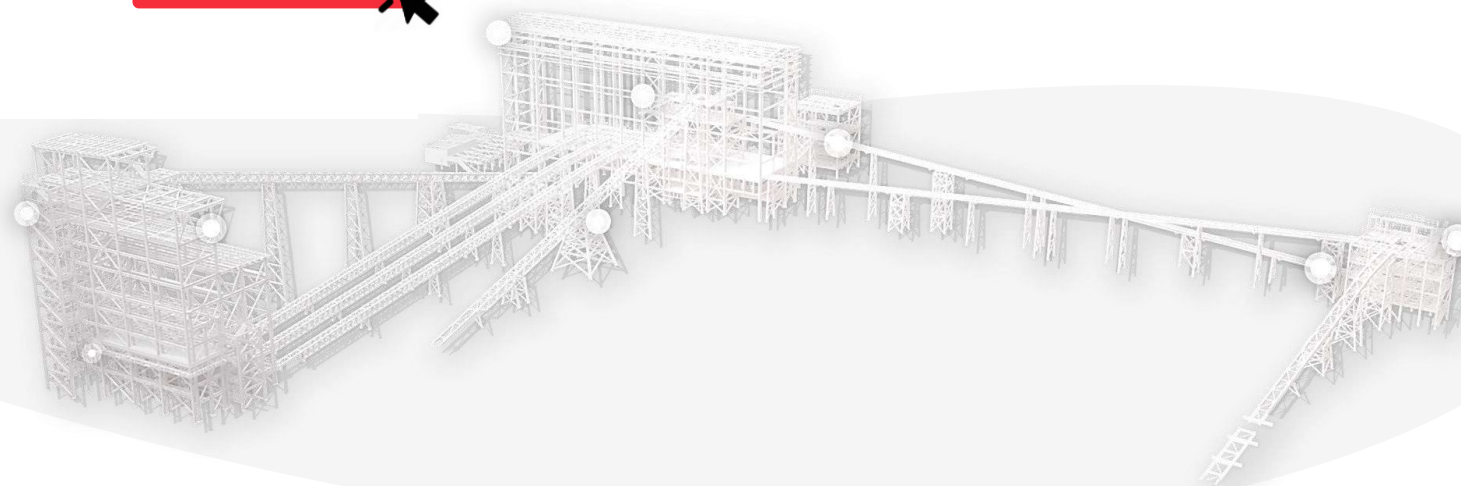
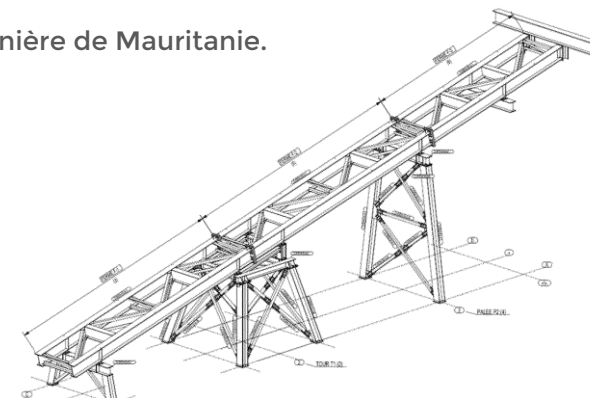
MAURITANIA | 2011

- ✓ INVESTMENT: 100 M€
- ✓ PROMOTER: SNIM - Société Nationale Industrielle et Minière de Mauritanie.
- ✓ CLIENT: **COPISA INDUSTRIAL**
- ✓ DATA OF INTEREST: 14.000 TN METALLIC STRUCTURE

#### DESCRIPTION

Manufacturing of **detail engineering** 14000 TN of metallic structure, process buildings, transfer towers and conveyor belts.  
**Outsourcing:** 3 electrical supervision and i & C professionals.

MORE INFO HERE





## 05.1 ENGINEERING PROJECT HIGHLIGHTS

# THE FEEDING PIT

INDUSTRIAL | FEEDING



## NEW SLICING PLANT

SPAIN, Murcia | 2011

- ✓ INVESTMENT: 40M€
- ✓ CLIENT: **CONSTRUCTORA SAN JOSÉ**
- ✓ DATA OF INTEREST: 80.000 m2

### DESCRIPTION

Mechanical and piping works for the generation and distribution of fluids (cold, hot, osmoticized water, steam, condensation, vacuum, amorinox, and fire fighting).

## NEW FACILITIES:

| WAREHOUSE-OFFICES-LABORATORY- COMMON AREAS|

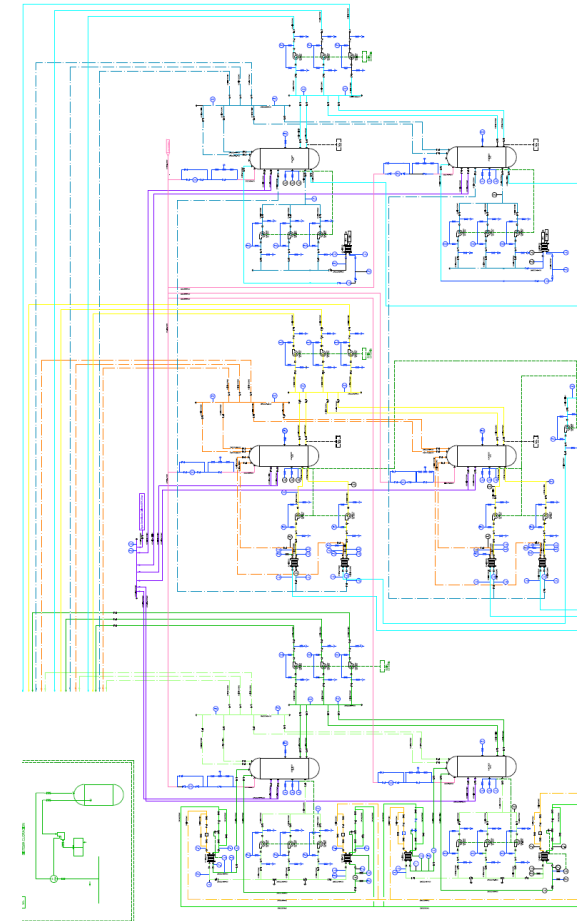
SPAIN, Murcia | 2012

- ✓ INVESTMENT: 12M€
- ✓ CLIENT: **CONSTRUCTORA SAN JOSÉ**
- ✓ DATA OF INTEREST: 10.800 m2

### DESCRIPTION

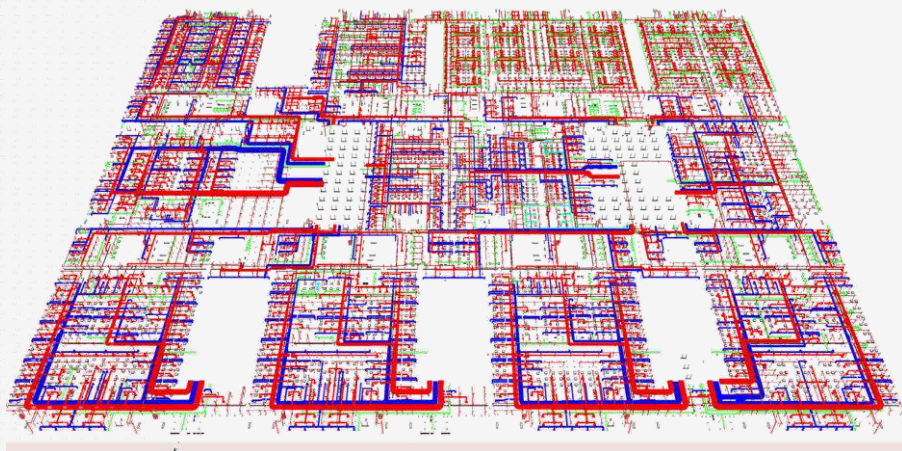
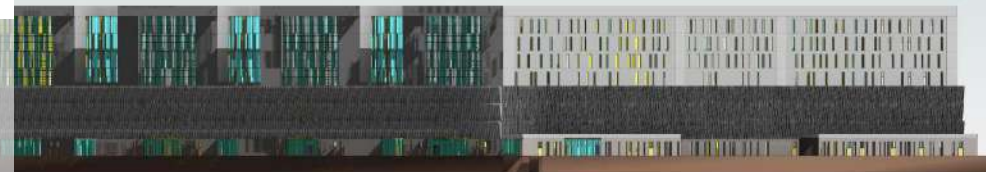
Mechanical and piping work for firefighting installations

MORE INFO HERE





## 05.1 ENGINEERING PROJECT HIGHLIGHTS



### AUDIT AND MEP MODELING (LOD 400) OF FACILITIES

BUILDING AND URBAN PLANNING | BIM MODELING HOSPITAL FARWANIYA

KUWAIT, FARWANIYA | 2015

- ✓ INVESTMENT: 750 M\$
- ✓ PROMOTER: MINISTRY OF HEALTH OF KUWAIT
- ✓ CLIENT: **CHESA**
- ✓ DATA OF INTEREST: 280.000 M2

#### DESCRIPTION

Design and MEP modeling (LOD 400) of 280,000 M2 facilities.  
1,093 beds and 20 operating rooms.

[MORE INFO HERE](#)





#### NEW INSTALLATIONS PLANTA MARPOL

INDUSTRIAL | WASTE TREATMENT

SPAIN, Las Palmas | 2019

- ✓ INVESTMENT: 12 M€
- ✓ CLIENT: SERTEGO
- ✓ DATA OF INTEREST: 8.000 ml

##### DESCRIPTION

Works in the mechanical, piping and civil areas for the development of the basic and detailed engineering of the new marpol installation, where the tasks of purchasing management and on-site supervision were also carried out.

[MORE INFO HERE](#) 

#### SHIP LOADING SYSTEM

INDUSTRIAL | FERTILIZER PLANT

ARGELIA, Arzew | 2017

- ✓ INVESTMENT: 4,8 M€
- ✓ CLIENT: FERTIAL
- ✓ DATA OF INTEREST: 1.000 Tn/h

##### DESCRIPTION

New ship loading system for 1,000 Tn/h from a new location 3 km away. Basic Engineering and Detailed Engineering. Study of existing pipes and proposal of new pipes; P&ID update; specification of new pumps; instrumentation.

PROJECT IN COLLABORATION WITH ICONSA





### AMINIUM WASHING OF FUEL GASES

OIL&GAS | PETROCHEMICAL PLANT | REFINERY

SPAIN, Puertollano | 2012

- ✓ INVESTMENT: 4,2 M€
- ✓ CLIENT: REPSOL PETRÓLEO
- ✓ DATA OF INTEREST:

#### DESCRIPTION

Basic Engineering and Detail Engineering of the Amine Washing Project for fuel gases at the Puertollano Refinery.

PROJECT IN COLLABORATION WITH ICONSA



### REFINERY PLANT OF NAPHTHALENE

OIL&GAS | PETROCHEMICAL PLANT | REFINERY

SPAIN, Asturias | 1996

- ✓ INVESTMENT: +12 M€
- ✓ CLIENT: IQN
- ✓ DATA OF INTEREST:

#### DESCRIPTION

Basic Engineering, Detailed engineering ,start-up assistance

PROJECT IN COLLABORATION WITH ICONSA



### TREATMENT PLANT OF RUNCORN

ENERGY | ENVIRONMENTAL | WASTE TREATMENT PLANT

UK, Manchester | 2009

- ✓ INVESTMENT: 2.325 M€
- ✓ CLIENT: KEPPEL SEGHERS BELGIUM
- ✓ DATA OF INTEREST: 2x87Mwth, 2x212.000TPY

#### DESCRIPTION

##### WASTE OF POWER

Runcorn Energy Recovery Facility is a combined heat and power (CHP) treatment plant. It treats between 850,000 and 890,000 tons of garbage-derived fuel each year; waste that would otherwise be sent to landfill. The fuel is produced from household and commercial waste, after recyclable materials have been removed.

Basic Engineering, Detailed Engineering, Supervision, Construction, Start-up of steam/turbine cycle, gas treatment (SNCR, non catalytic DeNox) and E&I start-up construction supervision.

PROJECT IN COLLABORATION WITH ICONSA

### URBAN WASTE TREATMENT PLANT SON REUS

ENERGY | ENVIRONMENTAL | WASTE TREATMENT PLANT

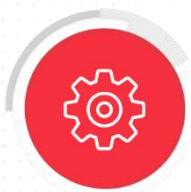
SPAIN, Mallorca | 2005

- ✓ INVESTMENT: 9 M€
- ✓ CLIENT: KEPPEL SEGHERS / TIRME
- ✓ DATA OF INTEREST: 2x150.000TPY

Modification of the gas treatment system. Gas cleaning system and new Denox SCR unit. Basic Engineering, Detailed Engineering, Construction Supervision, Start-Up Assistance.

PROJECT IN COLLABORATION WITH ICONSA





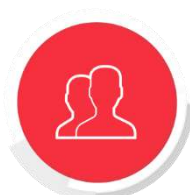
## PROJECT ENGINEERING

IDEA renders multidisciplinary engineering services for the development of industrial projects, based on BIM Methodology usage.



## TURN-KEY PROJECTS (EPC-INTELLIGENT)

IDEA carries out project management using management processes for design control, procurement, intelligent construction and commissioning.



## RECRUITMENT & OUTSOURCING

IDEA offers the R&O service as an extra resource that provides you with successful solutions for hiring professionals.



## DIGITAL TRANSFORMATION 4.0

IDEA provides the latest technology for the complete digitalization of the industrial environments;

- Design phases
- Operating
- Maintenance.



## ARCHITECTURE

IDEA invests on an architecture based on the uniqueness, avoiding the standardized and impersonal spaces.



## GRIDS

IDEA has wide experience in the installation of power distribution systems, telecommunications networks and renewable energies.





## TURN-KEY PROJECTS (EPC-INTELLIGENT)

IDEA performs Project Management using management processes for design control, procurement, construction and commissioning.

What distinguishes us is that our EPCs are based on intelligent construction, during the engineering phase 4D, 5D projects are carried out using BIM technology.

Billing Projects up to 4M/EPC

# EPC

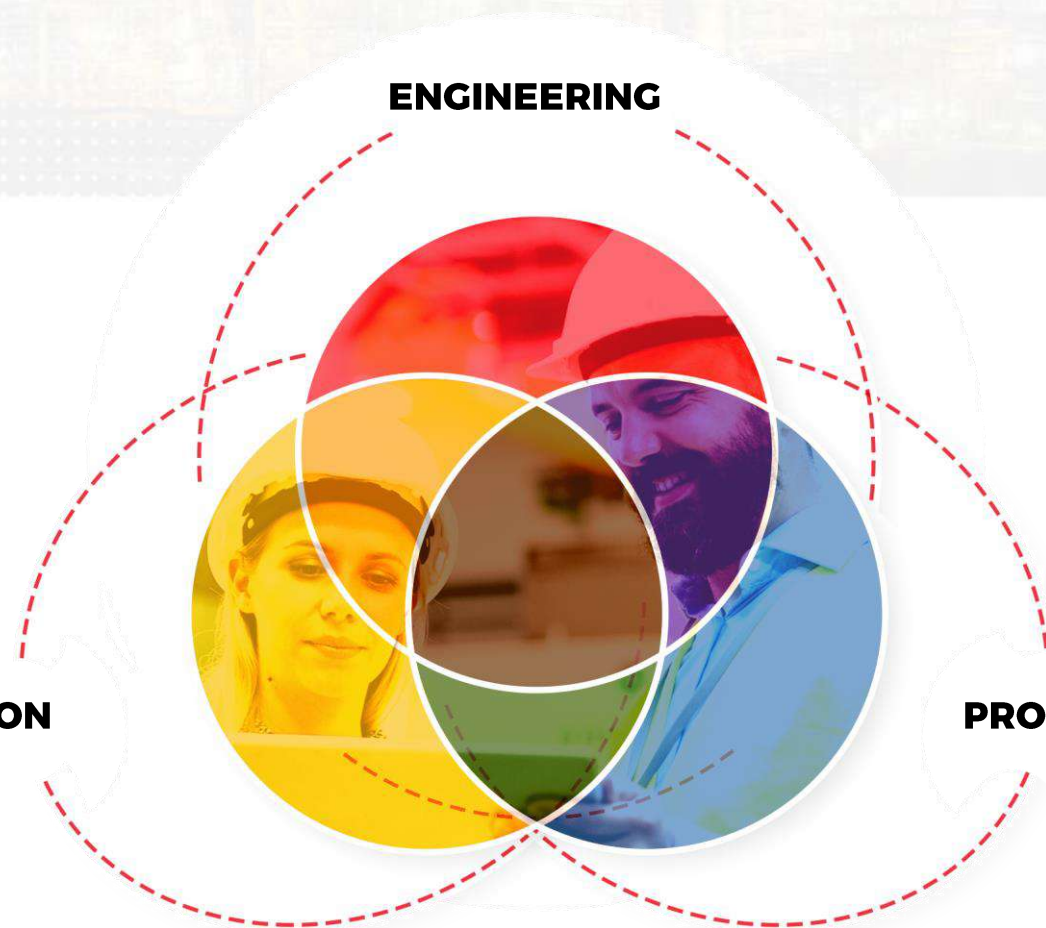
## Intelligent

*Engineering, Procurement and Construction Intelligent*

**CONSTRUCTION**

**ENGINEERING**

**PROCUREMENT**





#### EPC COMBINED CENTRAL CYCLE

ENERGY | COMBINED CENTRAL CYCLE

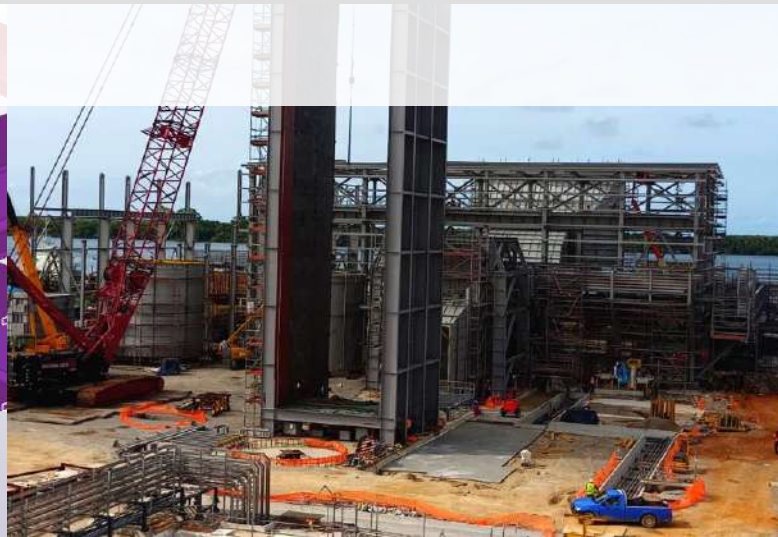
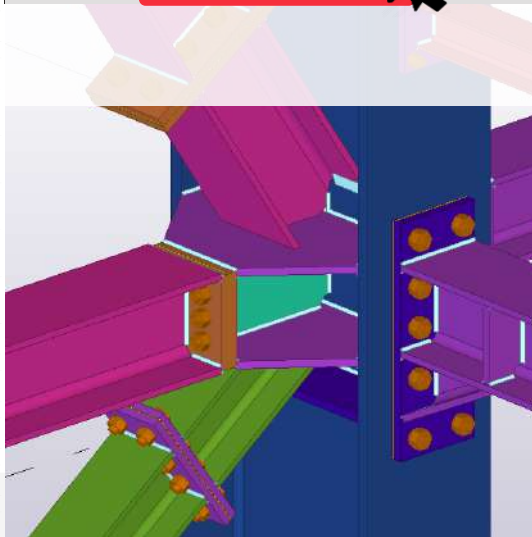
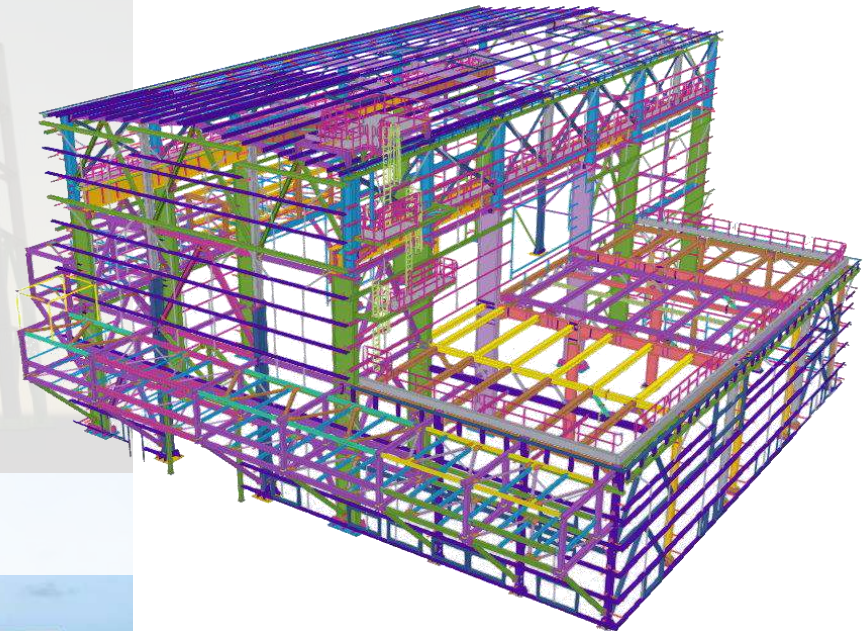
COSTA DE MARFIL | 2020

- ✓ CLIENT: GRUPO COBRA
- ✓ PROMOTER: AZITO ENERGY
- ✓ DATA OF INTEREST: 1875 Tn of metallic structures.

##### DESCRIPTION

EPC for the manufacture of 1,875 tons of metal structures for the expansion of the AZITO IV Combined Cycle Power Plant, in the Ivory Coast, which consisted of the construction of a new 253 MW combined cycle unit.

[MORE INFO HERE](#)





### EPC REACTOR BUILDING IN COMBINED CYCLE PLANT

ENERGY | COMBINED CYCLE POWER PLANT

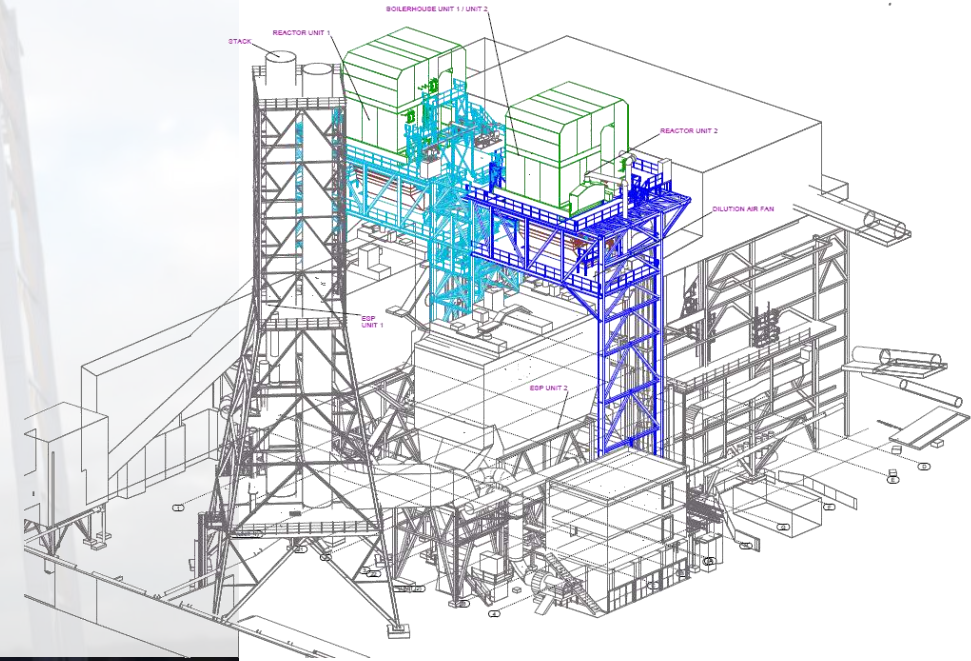
REUNION ISLAND, FRANCE | 2018

- ✓ CLIENT: MOS INDUSTRIAL
- ✓ PROMOTER: ALBIOMA
- ✓ DATA OF INTEREST: Building SCR: 300.000 Kg

#### DESCRIPTION

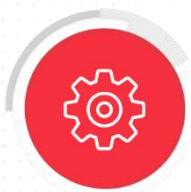
Detailed engineering for manufacturing, supply of both main and secondary structures and their supervision in the workshop during manufacturing and galvanizing for a 300-ton SCR building.

[MORE INFO HERE](#)





## 05. SERVICES



### PROJECT ENGINEERING

IDEA renders multidisciplinary engineering services for the development of industrial projects, based on BIM Methodology usage.



### TURN-KEY PROJECTS (EPC-INTELLIGENT)

IDEA carries out project management using management processes for design control, procurement, intelligent construction and commissioning.



### RECRUITMENT & OUTSOURCING

Idea offers the R&O service as an extra resource that provides you with successful solutions for hiring professionals.



### DIGITAL TRANSFORMATION 4.0

IDEA provides the latest technology for the complete digitalization of the industrial environments;

- Design phases
- Operating
- Maintenance.



### ARCHITECTURE

We invest on an architecture based on the uniqueness, avoiding the standardized and impersonal spaces.



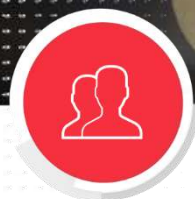
### GRIDS

IDEA has wide experience in the installation of power distribution systems, telecommunications networks and renewable energies.



## 05. SERVICES

### 05.3. RECRUITMENT&OUTSOURCING



## RECRUITMENT & OUTSOURCING

**R&O 2.0**  
RECLUTAMIENTO & OUTSOURCING

Our company offers the R&O service as an extra resource that provides you with successful solutions for hiring professionals.

We carry out a search for professionals in line with the requirements provided by our customers and we get the ideal candidate to slot into the job that you need to fill.

People are the skeleton of any Organization, recruiting the right professional means the success of the company.

### SEARCH AND SELECTION



RECRUITMENT  
& OUTSOURCING



MASSIVE SELECTION/HIRING  
PROCESSES

### GAMIFICATION IN TRAINING



IDENTIFYING SKILLS



FORMATIVE ITINERARY

CLICK HERE FOR MORE INFORMATION





## 05.3 RECRUITMENT & OUTSOURCING PROJECTS

### HIGHLIGHTS

# R&O 2.0

RECLUTAMIENTO & OUTSOURCING



## TECHNICAL ASSISTANCE- MAINTENANCE EQUIPMENT

INDUSTRIAL | CHEMICAL PLANT

SPAIN, MURCIA | 2014-PRESENT

- ✓ CLIENT: **ILBOC**
- ✓ DATA OF INTEREST:

Technical assistance from various professionals to meet the needs of the chemical company in peak periods. All of them destined for plant shutdowns and maintenance areas in their different specialties; civil, electrical, I&C, dynamic and static equipment, corrosion specialists, planning, management, etc.

MÁS INFO AQUÍ

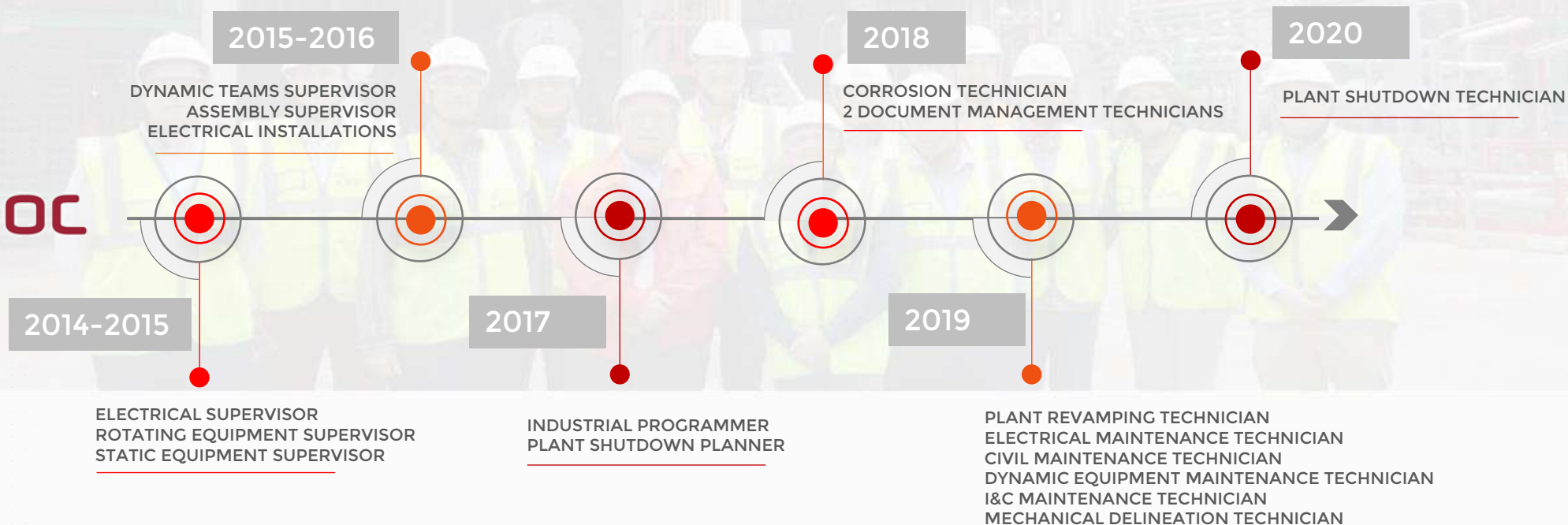


## 05.3 RECRUITMENT & OUTSOURCING PROJECTS

### HIGHLIGHTS

# R&O 2.0

RECLUTAMIENTO & OUTSOURCING



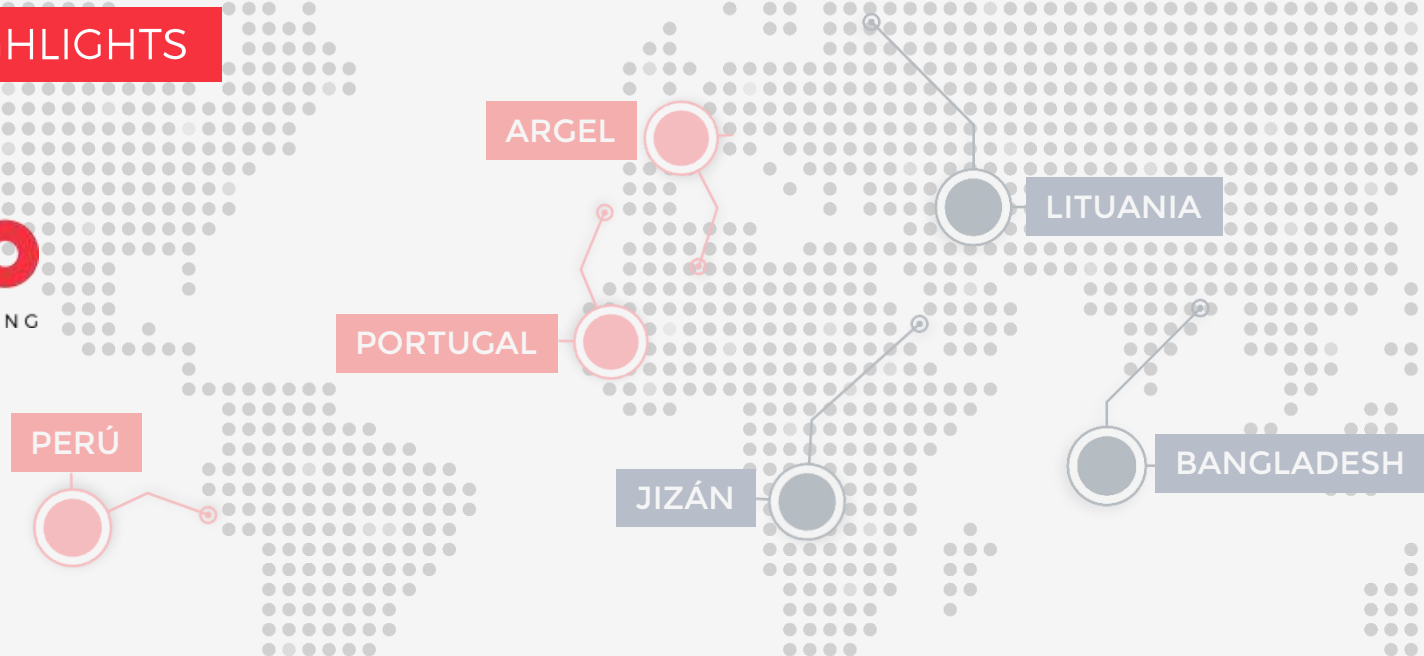


## 05.3 RECRUITMENT & OUTSOURCING PROJECTS

### INTERNATIONAL HIGHLIGHTS

**R&O 2.0**

RECLUTAMIENTO & OUTSOURCING



| INTERNATIONAL |





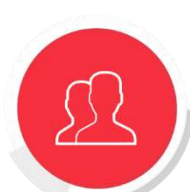
### PROJECT ENGINEERING

IDEA renders multidisciplinary engineering services for the development of industrial projects, based on BIM Technology usage.



### TURN-KEY PROJECTS (EPC-INTELLIGENT

IDEA carries out project management using management processes for design control, procurement, intelligent construction and commissioning.



### RECRUITMENT & OUTSOURCING

IDEA offers the R&O service as an extra resource that provides you with successful solutions for hiring professionals.



### DIGITAL TRANSFORMATION 4.0

IDEA provides the latest technology for the complete digitalization of the industrial environments;

- Design phases
- Operating
- Maintenance.



### ARCHITECTURE

IDEA invests on an architecture based on the uniqueness, avoiding the standardized and impersonal spaces.



### GRIDS

IDEA has wide experience in the installation of power distribution and telecommunication networks and renewable energies.





## 05. SERVICES

### 05.4. DIGITAL TRANSFORMATION



We participate in the development of many companies, helping them to achieve the degrees of digitization they need. Offering the latest technology available for the management and maintenance of facilities and industrial processes.

## SERVICES



### BIM DIGITAL TWIN

New disruptive model of non-intrusive Digital Twin and fast Implementation, valid for any sector and within the reach of any budget.

[VISIT OUR WEB SITE](#)



[WATCH VIDEO BIM DIGITAL TWIN](#)



### IMMERSIVE TECHNOLOGIES

Virtual Reality, Augmented Reality, Mixed Reality and Advanced Training Experience.



### CONSULTANCY AND DEVELOPMENT

Digital consulting, training and software development..



### DIGITALIZATION AND MODELING

Digitization of environments, drones, point clouds and additive manufacturing.



## 05.4 DIGITAL TRANSFORMATION

### HIGHLIGHTS



### BIM DIGITAL TWIN

INDUSTRIAL | CHEMICAL PLANT

SPAIN, MURCIA | 2018- PRESENT

✓ CLIENT: **ILBOC**

✓ PROMOTER: ILBOC

✓ DATA OF INTEREST:

Digital twin, based on the BIM model, for management and simulation of the operation and maintenance phases of the industrial plant.

### FEATURES

- 01 — Monitoring and data management, in real time, through dashboards integrated with the BIM model. Scada 3D.
- 02 — Simulation of the behavior of critical assets, through the use of Business Intelligent (BI).
- 03 — Simulation of critical maneuvers, such as new extensions or work stoppages, to optimize the planning of personnel and materials, of the work involved.
- 04 — Simulation of the degree of corrosion of the facilities, according to different attack methods.
- 05 — Simulations aimed at enhancing predictive maintenance. The possibility of finding correlations between failures, never before related, stands out.
- 06 — Connection of the BIM model with other native plant data management layers, such as ERP, CRM, CMMS or MES.
- 07 — Connection of the BIM model, with the document manager, for the integration of information in silos.

[MORE INFO HERE](#)





## 05.4 DIGITAL TRANSFORMATION

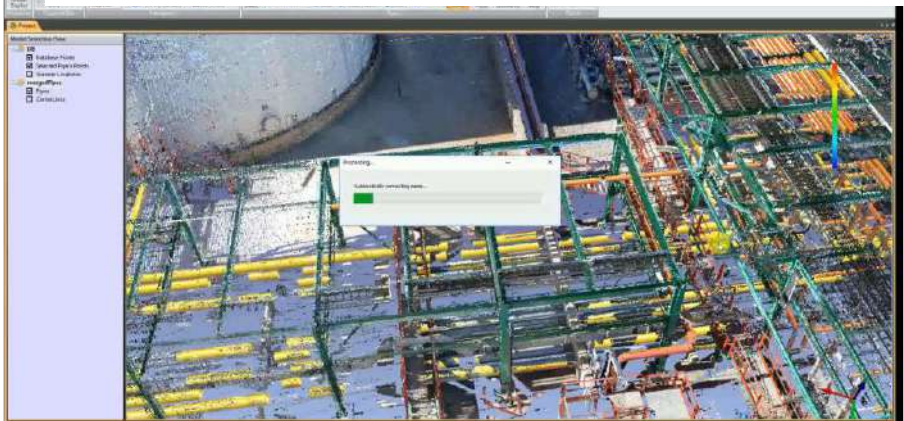
### HIGHLIGHTS



### POINT CLOUD WITH DRONES AND LASER SCANNER



### MESH RECOGNITION TO OBTAIN 3D MODEL



### BIM MODEL WITH 360° IMAGES



### TOUR 360°





## 05.4 DIGITAL TRANSFORMATION

### HIGHLIGHTS

#### RA - KLINGER

INTERNATIONAL MANUFACTURER OF VALVES | INDUSTRIAL SECTOR

SPAIN, MADRID | 2019

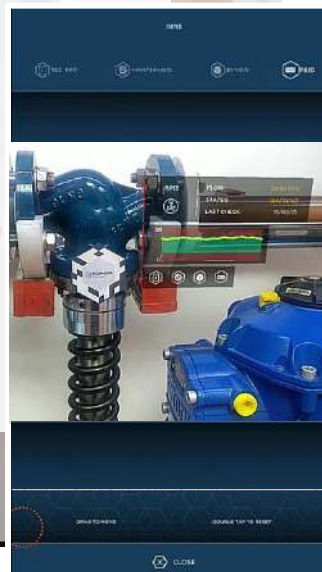
✓ CLIENT: **KLINGER**

✓ DATA OF INTEREST:

Design and development of a multiplatform app with Augmented Reality for use on mobile devices in order to show the possibilities in the industrial maintenance of plant elements.

- 01 — Visualization of information in real time about the valve itself thanks to AR.
- 02 — Access to the 3D model of the valve.
- 03 — Access to information and technical documentation of the valve. Information.
- 04 — Visualization of the valve maintenance history in real time.
- 05 — Simulation of processes in which valves participate, such as water hammer.

MORE INFO HERE 



#### RV - CEPSA

INDUSTRIAL | CHEMICAL PLANT

SPAIN, MADRID | 2019

✓ CLIENT: **CEPSA**

✓ PROMOTER: CEPESA

✓ DATA OF INTEREST:

VR for training and practice of dangerous maneuvers in refinery, developed in Unity3D, Autodesk 3dMax and Substance Painter, and that has the following characteristics:

- 01 — Hyper-realistic recreation of the refinery and the simulation environment.
- 02 — Accurate simulation of all the mechanics and steps to be carried out during the maneuvers.
- 03 — Possibility to choose between a guided (learning) or free (evaluation) mode.
- 04 — Possibility of modifying the environmental conditions of the simulation (day / night simulation).
- 05 — Scoring system based on the actions carried out during the simulation.





## 05.4 DIGITAL TRANSFORMATION

### A REFERENT IN 4.0 INDUSTRY

#### TRAINERS & SPEAKERS



## 05. SERVICES



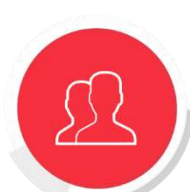
### PROJECT ENGINEERING

IDEA renders multidisciplinary engineering services for the development of industrial projects, based on BIM Methodology usage.



### TURN-KEY PROJECTS (EPC-INTELLIGENT)

IDEA carries out project management using management processes for design control, procurement, intelligent construction and start-up.



### RECRUITMENT & OUTSOURCING

IDEA offers the R&O service as an extra resource that provides you with successful solutions for hiring professionals.



### DIGITAL TRANSFORMATION 4.0

IDEA provides the latest technology for the complete digitalization of the industrial environments;

- Design phases
- Operating
- Maintenance.



### ARCHITECTURE

IDEA invests on an architecture based on the uniqueness, avoiding the standardized and impersonal spaces.



### GRIDS

IDEA has wide experience in the installation of power distribution systems, telecommunications networks and renewable energies.







## ARCHITECTURE

In IDEA we are devoted to an architecture type based on uniqueness, staying away from the standardization and depersonalization of spaces. Moreover, we believe in a constant enquiry into the ways of living in the society of the future, projecting innovative spaces through the most advanced BIM technology.

**Architecture** must approach engineering **without compromising the emotion.**

ARCHITECTURE  
AND DESIGN

BIOCLIMATIC  
ARCHITECTURE

TURN-KEY

PROJECT  
MANAGEMENT

DIGITAL  
ARCHITECTURE

INDUSTRIAL AND  
INFRASTRUCTURE





## 05.5 SERVICES - ARCHITECTURE

### HIGHLIGHTS

#### LIBRARY IN LAS TABLAS

BUILDING AND URBAN PLANNING | COMPETITION

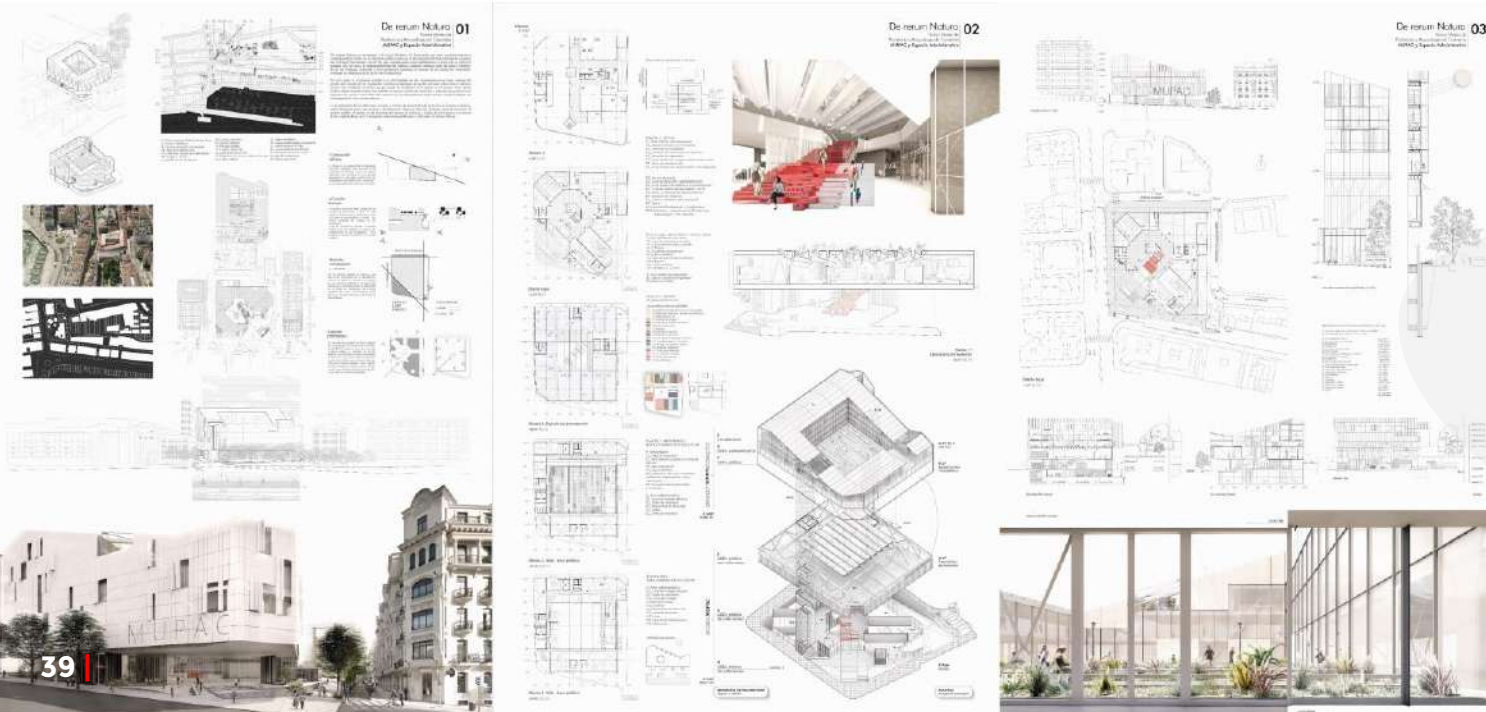
LAS TABLAS, MADRID | 2019

- ✓ INVESTMENT: 3,6 MILLONES M€
- ✓ PROMOTER: CITY OF MADRID
- ✓ CLIENT: COAM
- ✓ DATA OF INTEREST

Published in the VI Congress of Nearly Zero Energy Buildings and in the International Greencities Congress.



[MORE INFO HERE](#)



#### MUPAC MUSEUM - *De Rerum Natura*

BUILDING AND URBAN PLANNING | COMPETITION

SANTANDER, CANTABRIA | 2019

- ✓ INVESTMENT: 36 M€
- ✓ PROMOTER: CONSEJERÍA DEL GOBIERNO DE CANTABRIA
- ✓ DATA OF INTEREST

De Rerum Natura is the architectural proposal for the New Museum of Prehistory and Archeology developed together with Combolab. He interprets the genius loci from a calm language and a geometry adjusted to the landscape of the city of Santander based on a bioclimatic strategy.

[MORE INFO HERE](#)





## 05.5 SERVICES - ARCHITECTURE

### HIGHLIGHTS



### INTERIOR DESIGN OFFICES

BUILDING AND URBAN PLANNING | OFFICES

ELCHE, ALICANTE | 2017

- ✓ INVESTMENT: 80.000 €
- ✓ CLIENT: IDEA INGENIERÍA
- ✓ DATA OF INTEREST

Remodeling of offices: Basic project, execution and construction management.

The design is materialized by understanding the office as a physical representation of the ideology and the human team that are part of IDEA Ingeniería.

[MORE INFO HERE](#)



### SUSTAINABLE ARCHITECTURE

BUILDING AND URBAN PLANNING | RESIDENTIAL

MURCIA, SPAIN | 2020

- ✓ INVESTMENT: 136 M€
- ✓ DATA OF INTEREST

The bioclimatic architecture project of 1,300 houses proposes an extension of the city along a large vegetal axis.

Project in collaboration with Ignacio García-Marcos Álvarez.

[MORE INFO HERE](#)



## 05.5 SERVICES - ARCHITECTURE

### HIGHLIGHTS



### REHABILITATION OF OFFICES

ARCHITECTURE AND DESIGN | OFFICES

MURCIA, ESPAÑA | 2021

✓ CLIENT: GOLOSINAS FINI

✓ DATA OF INTEREST

The new FINI offices are designed as an oasis embedded in a gray industrialized landscape.

*The project transforms the office center into the bioinhabitable and sustainable core of the industrial complex.*

MORE INFO HERE



### URBAN PLANNING AND LANDSCAPING

BUILDING AND URBANISM | PORT AUTHORITY

MURCIA, ESPAÑA | 2020

✓ INVESTMENT: 28,8 M€

✓ CLIENT: CARTAGENA PORT AUTHORITY

✓ DATA OF INTEREST

"Ports of Cartagena" was born with the intention of giving a clear, unitary and identity response to the urban, landscape, social and commercial design of the Port of Cartagena.

*Project in collaboration with the Martín Lejarraga Studio, Fulgencio Avilés.*

MORE INFO HERE

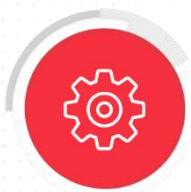


| [ideaingenieria.es](http://ideaingenieria.es)





## 05. SERVICES



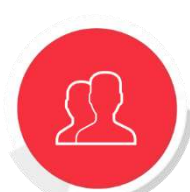
### PROJECT ENGINEERING

IDEA renders multidisciplinary engineering services for the development of industrial projects, based on the deployment of BIM Methodology.



### TURN-KEY PROJECTS (EPC-INTELLIGENT)

IDEA carries out project management using management processes for design control, procurement, intelligent construction and start-up.



### RECRUITMENT & OUTSOURCING

IDEA offers the R&O service as an extra resource that provides you with successful solutions in the hiring of professionals.



### DIGITAL TRANSFORMATION 4.0

IDEA provides the latest technology for the complete digitalization of the industrial environments;

- Design phases
- Operating
- Maintenance.



### ARCHITECTURE

IDEA invests on an architecture based on the uniqueness, avoiding the standardized and impersonal spaces.



### GRIDS

IDEA has wide experience in the installation of power distribution systems, telecommunications networks and renewable energies.



## 05. SERVICES

### 05.6. GRIDS



## GRIDS

At IDEA we have extensive engineering experience in the implementation of high voltage systems, from electricity transmission and distribution (T&D), supply and evacuation lines up to 220 kV, to substations (up to 220 kV), in underground, aerial or horizontal directed drilling (HDD) and generation plants.

We develop activities in the field of renewable energy with experience in wind farms and several photovoltaic parks (50 MVA).



### ELECTRICAL TRANSMISSION AND DISTRIBUTION LINES



### ELECTRICAL SUBSTATIONS



### TELECOMMUNICATIONS



### RENEWABLE ENERGIES





## 05. SERVICES

### 05.6. GRIDS



## FRAMEWORK CONTRACTORS OF THE MOST IMPORTANT ELECTRICAL MULTINATIONALS IN SPAIN



### IDE - IBERDROLA GROUP

2012 - PRESENT

INVESTMENT - 6 M€

Framework contracts for the comprehensive management of airline, underground, telecommunications and transformation center projects. BT, MT and AT works, up to 66 kV.



### IBERDROLA SPAIN ENERGY

2018 - PRESENT

INVESTMENT - 1,2 M€

Framework contracts for the comprehensive management of fiber optic laying projects in LAMT and underground, up to 66 kV.



### IBERDROLA RENEWABLE

2020 - PRESENT

INVESTMENT - 0,8 M€

Framework contracts for carrying out executive projects for evacuation lines in renewable, photovoltaic and wind energy plants, up to 400 kV.



### ENDESA

2021 - PRESENT

INVESTMENT - 8 M€

Framework contracts for the comprehensive management of projects for overhead lines, underground lines and transformation centers. BT, MT and AT works, up to 66 kV.



ZONA CENTRO,  
MURCIA, ALICANTE



JAEN, GRANADA, ALMERIA

COMUNIDAD  
VALENCIANA

MURCIA

ANDALUCÍA

MORE INFO HERE



## SUCCESS CASES



### POWER LINE AT 66 kV

#### IBERDROLA

##### KEY DATA

Project for the construction of a 66 kV, double-circuit power line, PV ST VILLAMANRIQUE - ST MORATA. Entirely aerial double circuit length of 26 km.



### POWER LINE AT 220 kV

#### IBERDROLA

##### KEY DATA

220 kV overhead single-circuit, single/double-circuit underground power line, WF ST VILLARINO - ST ICE VILLARINO - ST VILLARINO REE 220V.



### UNDERGROUND LINE AT 20 Kv

#### IBERDROLA

##### KEY DATA

20 kV underground power line construction project. Quadruple circuit, length 12(km). 1.5 km directed perforation. MV underground line.



### SOLAR FARM

#### SOLAR FARM GARDEN MURCIA

##### KEY DATA

Surface area of 4,018m<sup>2</sup>. Voltage of 132 kV/30 kV. Power of 50 MVA. ST JUMILLA



### HIGH-VOLTAGE LINE ISLAS MENORES

#### POWERIS

##### KEY DATA

Project for the construction of a 400 kV high-voltage line, 17.3 km long. REE connection. ISLAS MENORES



### SOLAR PLANT EL SOTO

#### GLOBAL SOLAR ENERGY

##### KEY DATA

Execution of fixed structure solar power plant project. Power of 120 MVA.



### SOLAR PLANT ÁVILA

#### ALDESA

##### KEY DATA

Planta Langa (Ávila). Power of 3.05 MW. Galvanized steel tracker structure.

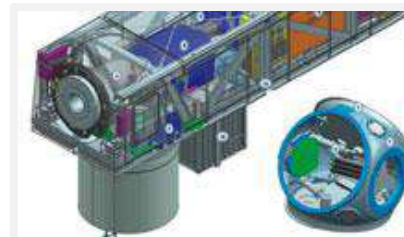


### SOLAR PLANT CARTAGENA

#### VERTEX

##### KEY DATA

Self-consumption solar plant (Cartagena) Power of 4.5 MW. Fixed structure.

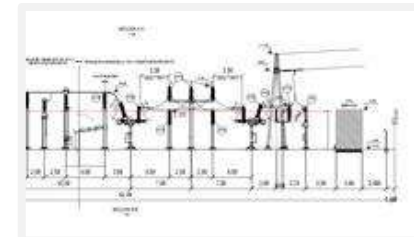


### WIND FARM VILLARES

#### EOLIA

##### KEY DATA

Villares Wind Farm (Cuenca). Power of 79.2 MW. Overhead power of 6.6 MW. BVJE of 115 M



### SUBSTATION - STM SARGANELLA 132 KV

#### KENERMORA

##### KEY DATA

Maneuvering substation to evacuate energy from photovoltaic plant. Voltage of 132/20 kV. Power of 40 MW. Surface area of 4,588m<sup>2</sup>.



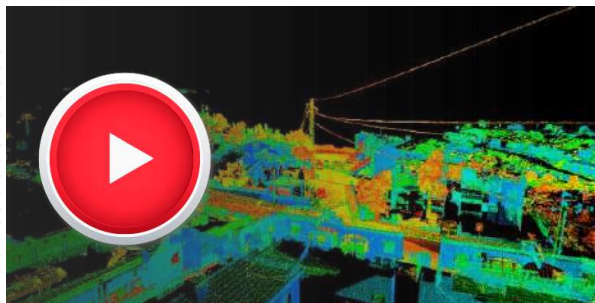
#### WHAT DO WE OFFER YOU?



#### SOME OF OUR DIFFERENTIATING SERVICES

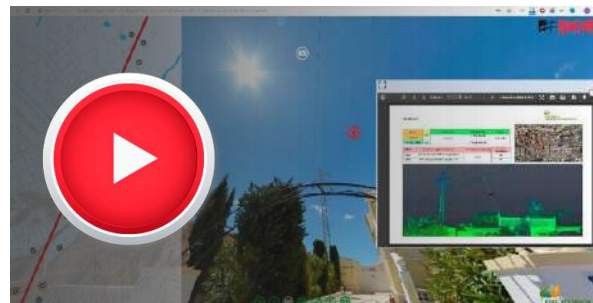
#### Technology, innovation and future.

We apply the latest technology  
in our network services.



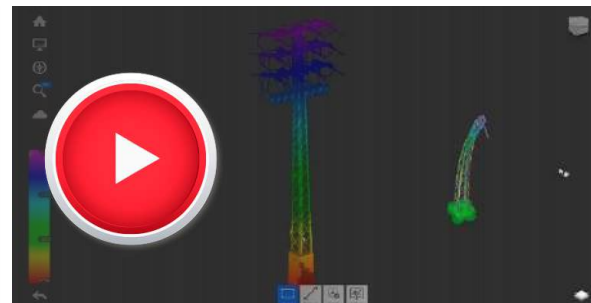
#### ELECTRICAL ANOMALY DETECTION BY LEICA LASER SCANNER

Data acquisition with Leica laser scanner, point cloud analysis, electrical anomaly detection and report generation if required.



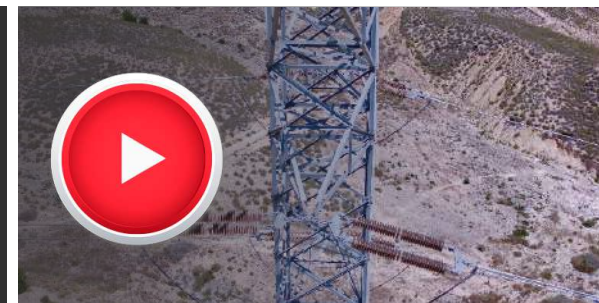
#### GENERATION OF 360° VIRTUAL TOUR WITH DETECTED ANOMALIES

Generation of a 360° virtual tour with reports of detected anomalies. This reduces work times and costs and provides a tool for managing completed works.



#### STUDY OF MECHANICAL RESISTANCE, GENERATING A 3D BIM MODEL

Data acquisition with Faro laser scanner. Semi-automatic 3d model creation with EdgeWise, conforming to European standards. We conduct a study of new loads and generate a report with Tower.



#### STUDY OF CORROSION AND HOT SPOTS ON DISTRIBUTION SUPPORTS

We obtain the data with a drone, taking photos and videos to generate reports. This reduces working time and costs and allows access to inaccessible areas.



## 05. SERVICES

### 05.6. NEW PRODUCTS & SERVICES



ERIS

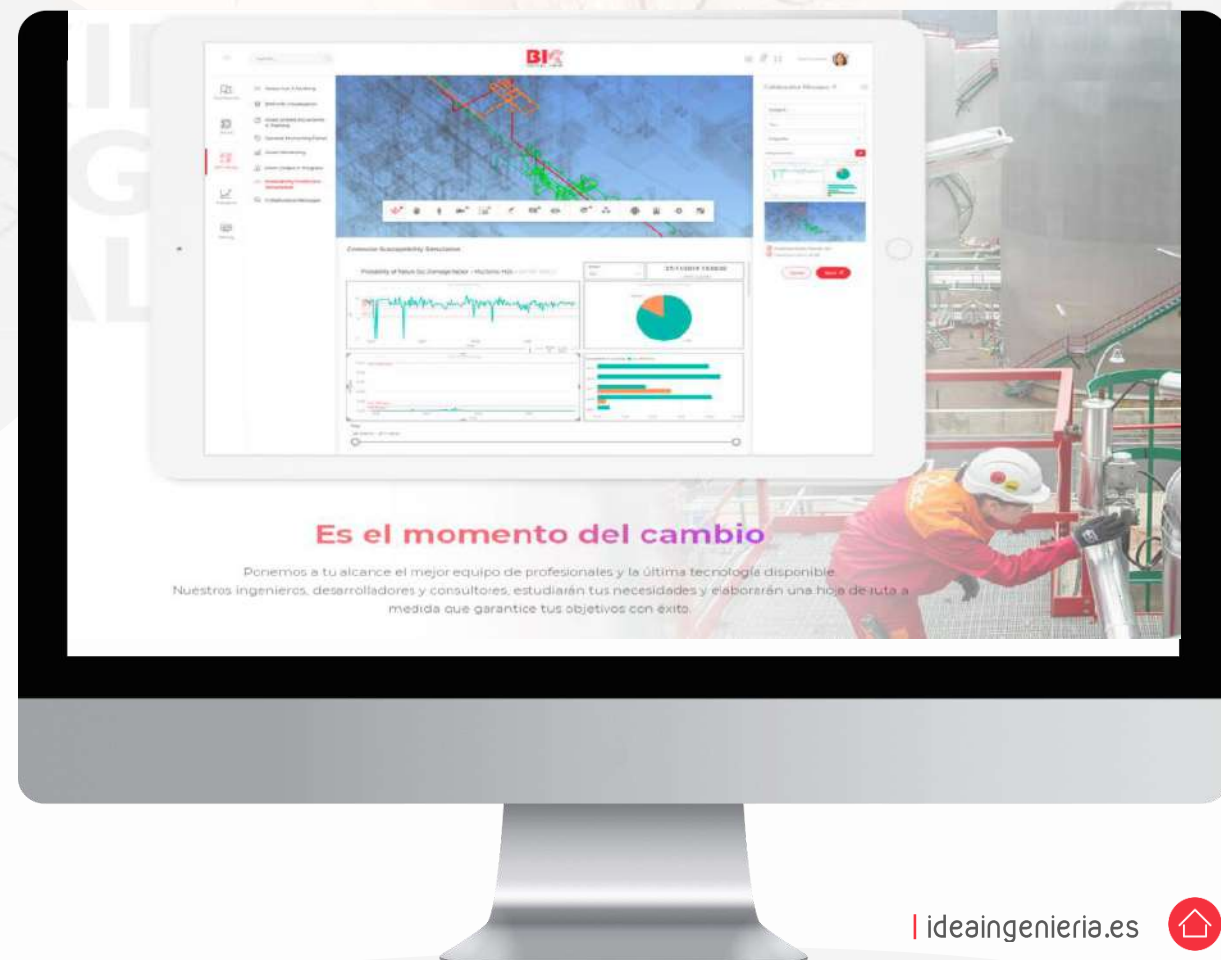


BIM DIGITAL TWIN



## THE DIGITAL TWIN NEW DISRUPTIVE MODEL

"BIM DIGITAL TWIN" – A PRODUCT DEVELOPED BY IDEA





## 06. IDEA TEAMS

### VALUE PROPOSITION

# Value Proposition

IDE/AGILE

TECHNOLOGICAL INNOVATION  
BIM  
SPEED  
PRICE  
QUALITY

IMAGE  
BRAND

RELATIONSHIP  
FLEXIBILITY  
PERSONALIZED SERVICE

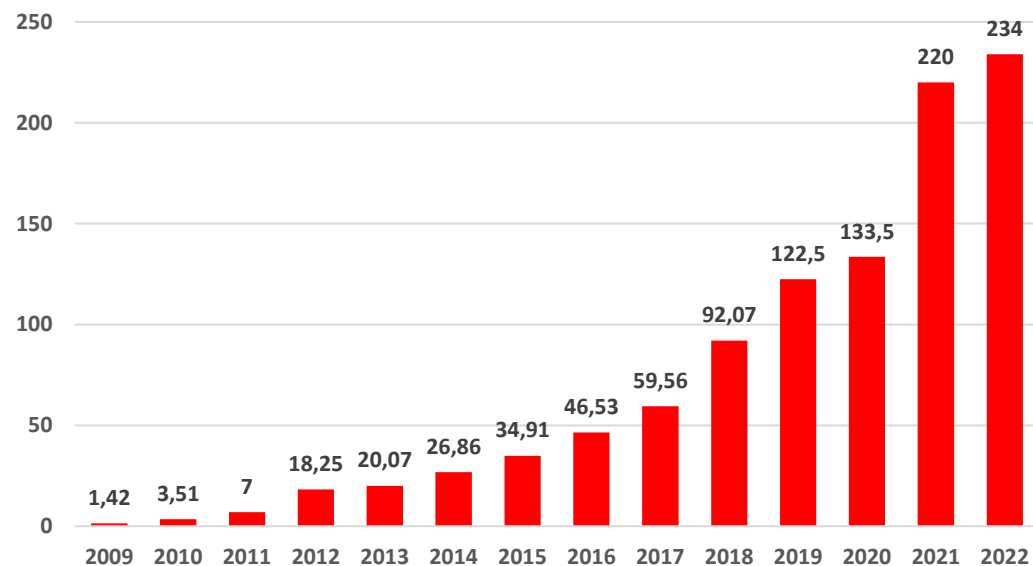


## 06. IDEA TEAMS

### RESOURCES AND CAPABILITIES

#### NUMBER OF EMPLOYEE ´S EVOLUTION IN THE LAST YEARS

Evolución Personal 2009 - 2022



**38 YEARS**

STAFF  
AVERAGE AGE

**+10**

INCORPORATION  
OF TRAINEES

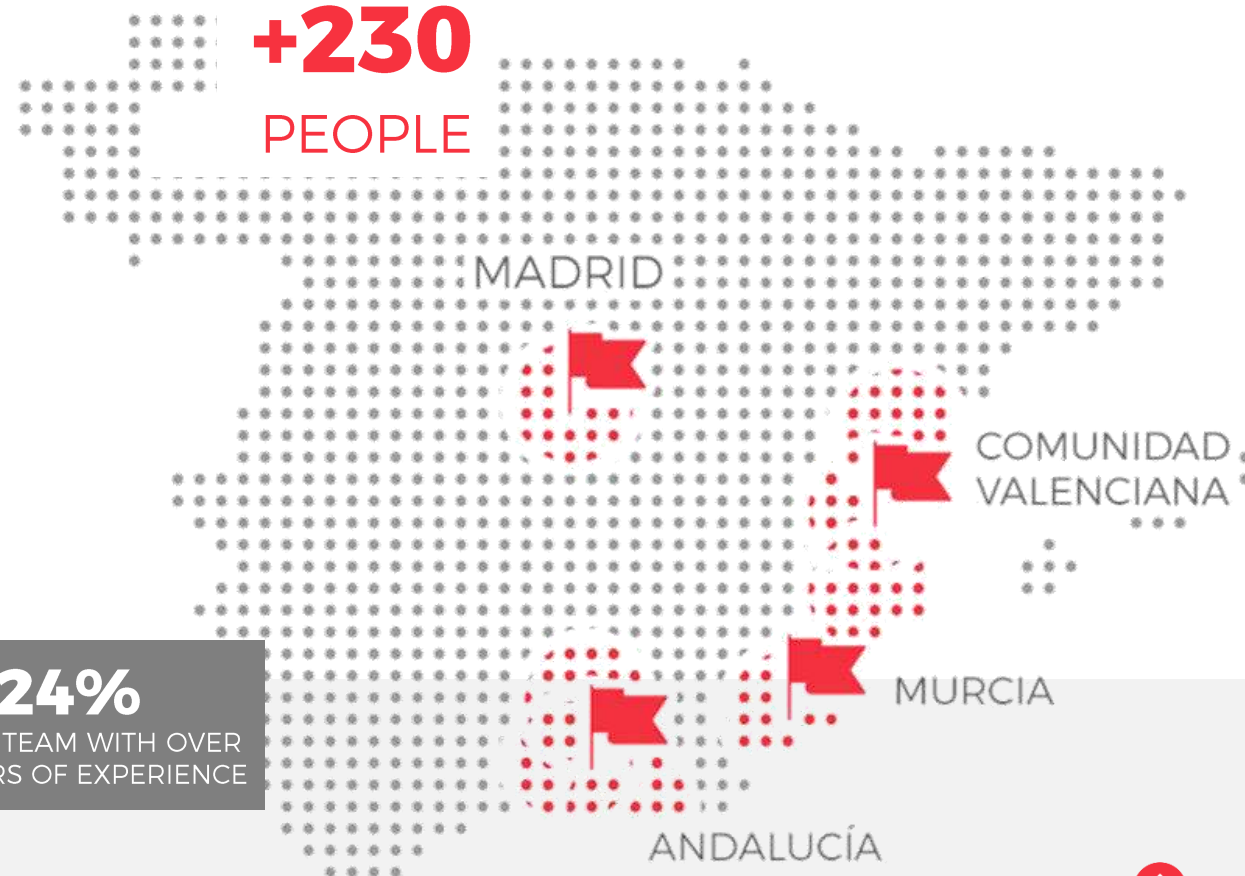
**2 YEARS**

AVERAGE LENGTH  
OF SERVICE

**24%**

SENIOR TEAM WITH OVER  
10 YEARS OF EXPERIENCE

**+230  
PEOPLE**

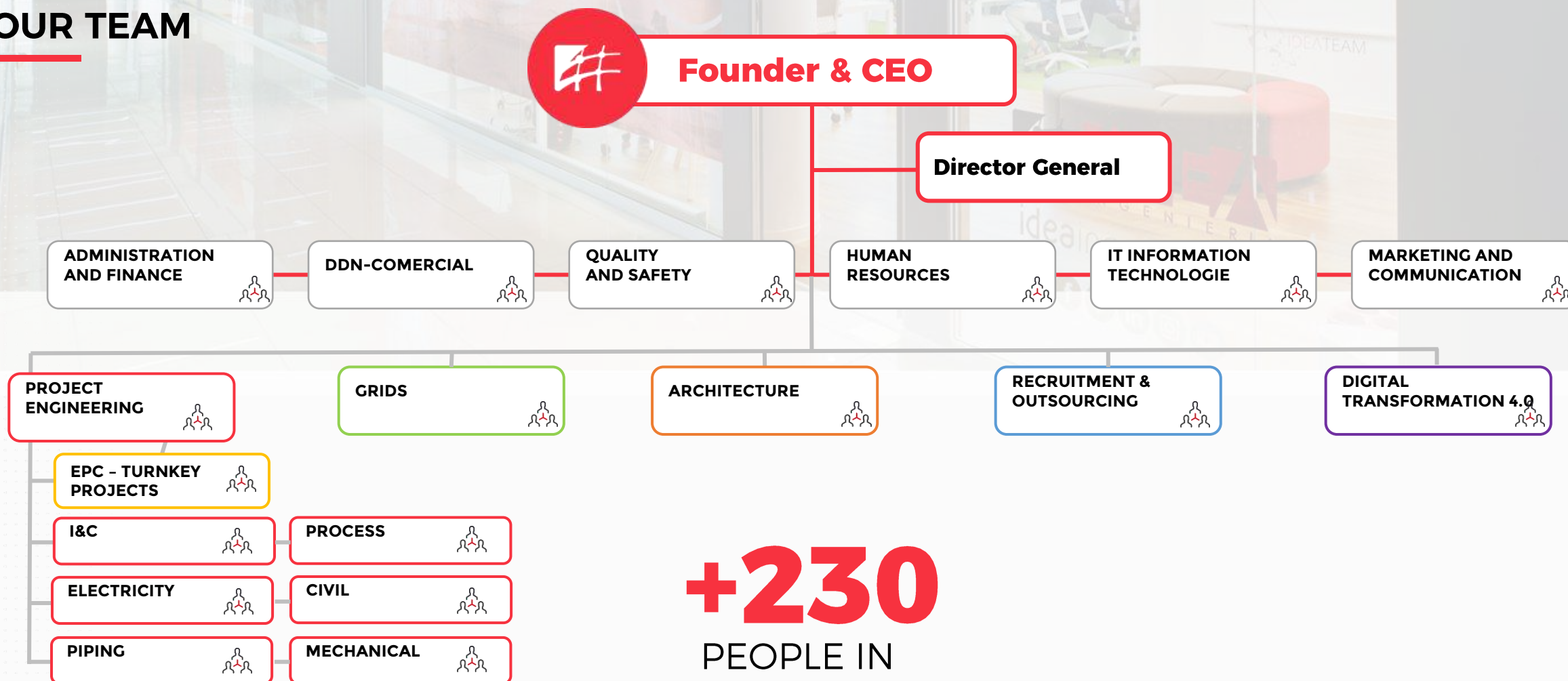




## 05. ORGANIZATION CHART



### OUR TEAM



**+230**  
PEOPLE IN  
THE TEAM



## 06. IDEA TEAMS

### SOFTWARES



#### NETWORKS

PLS-CADD PLS-TOWER

#### ARCHITECTURE



#### CROSS-DEPARTMENT.



#### TURN-KEY PROJECTS (EPC)



#### RECRUITMENT & OUTSOURCING



#### DIGITAL TRANSFORMATION

##### 3D ADDITIVE MANUFACTURING

##### POINT CLOUD



##### AR/VR/XR



##### SMART BIM



#### ENGINEERING

##### COMPUTATION



##### 3D MODELING



##### ELECTRICITY



##### PIPING



##### DELINEATION



##### INSTRUMENTATION



##### FIRE PROTECTION





## 06. IDEA TEAMS



### AWARDS AND CERTIFICATIONS

#### AWARDS

**2012 | YOUNG ENTREPRENEUR AWARD, CAJA MURCIA**



**2016 | EUROPEAN MEDAL FOR MERIT IN WORK, AEEC**

**2018 | EUROPEAN ENTREPRISE MANAGEMENT AND INNOVATION AWARD, AEEC**



**2018 | BEST CORPORATE WEBSITE**



**2018 | MOST INNOVATIVE SME, COIIM**



**2018 | INNOBANKIA TO THE 4.0 INDUSTRY**



**2018 | CONSTRUSOFT BIM ADWARDS**



**2019 | BEST ENGINEERING PROJECT, CGCOII and AIIRM**



**2019 | ONES TO WATCH LIST, EBA**



**2019 | INTERNATIONALIZATION, AWARD, CÁMARA COMERCIO MURCIA.**



**2019 | MOST INNOVATIVE COMPANY: PREMIOS FUTURO TELECOMUNICACIONES.**



**2022 | CEPYME - BEST INNOVATION COMPANY**



#### CERTIFICATIONS



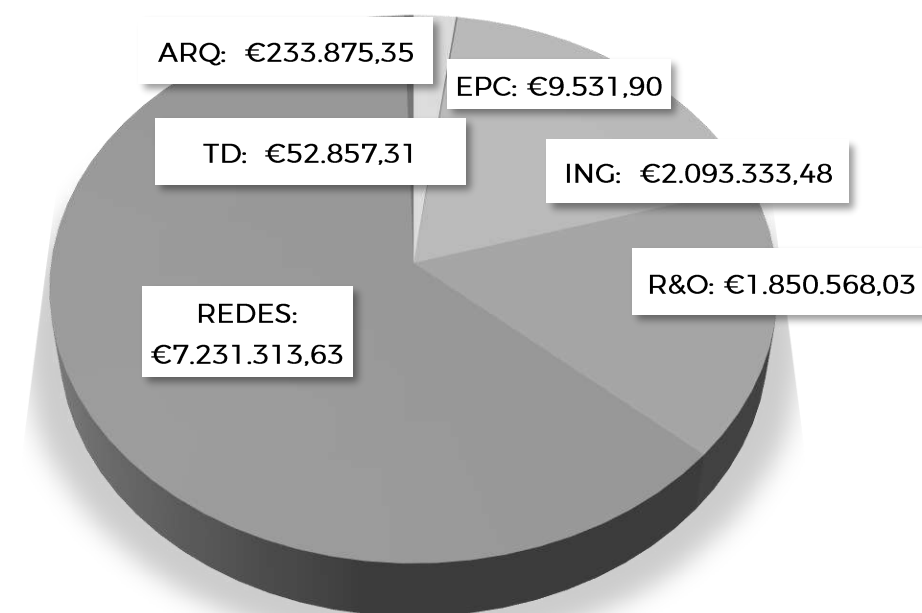
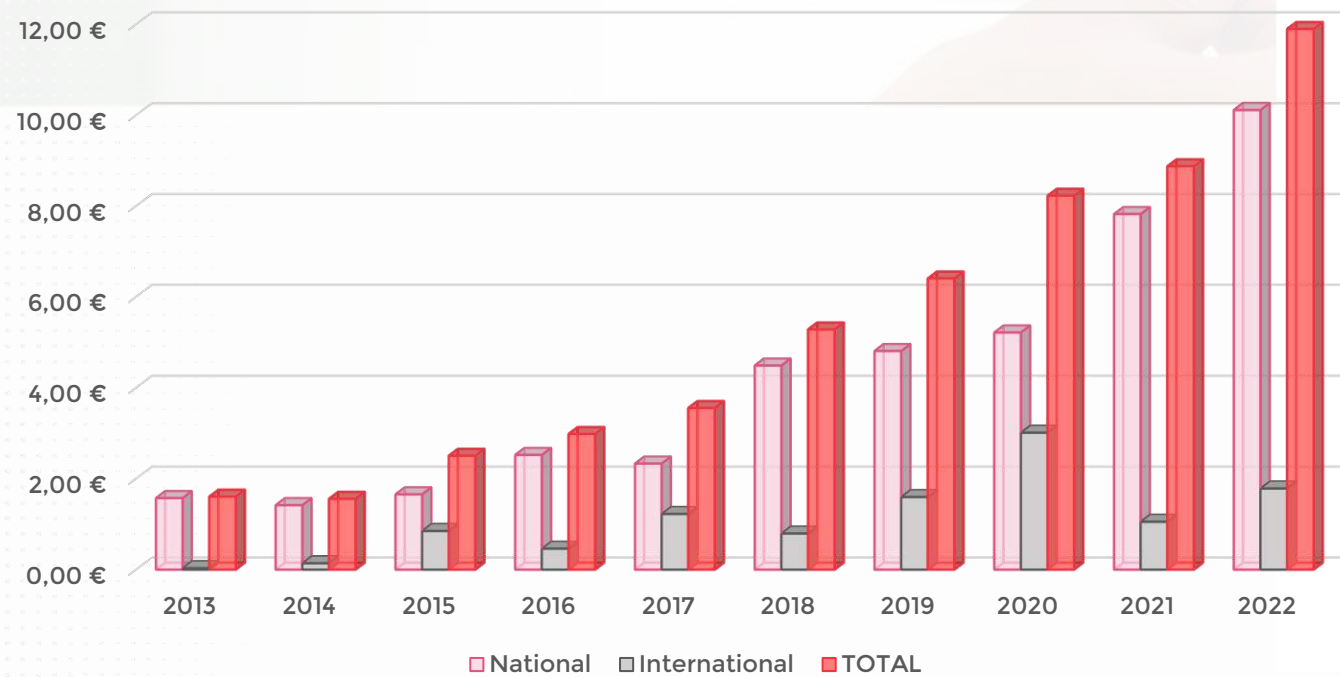
## 07. IDEA IN FIGURES



### TURNOVER

## BILLING DEVELOPMENT AND SPREAD

MILLIONS (€)



### NATIONAL BILLING OF SERVICES

\*Data of 2022





### STRATEGY

### INTERNACIONALIZATION

ENGLAND

EUROPE

AFRICA

MIDDLE  
EAST

## 07. IDEA IN FIGURES



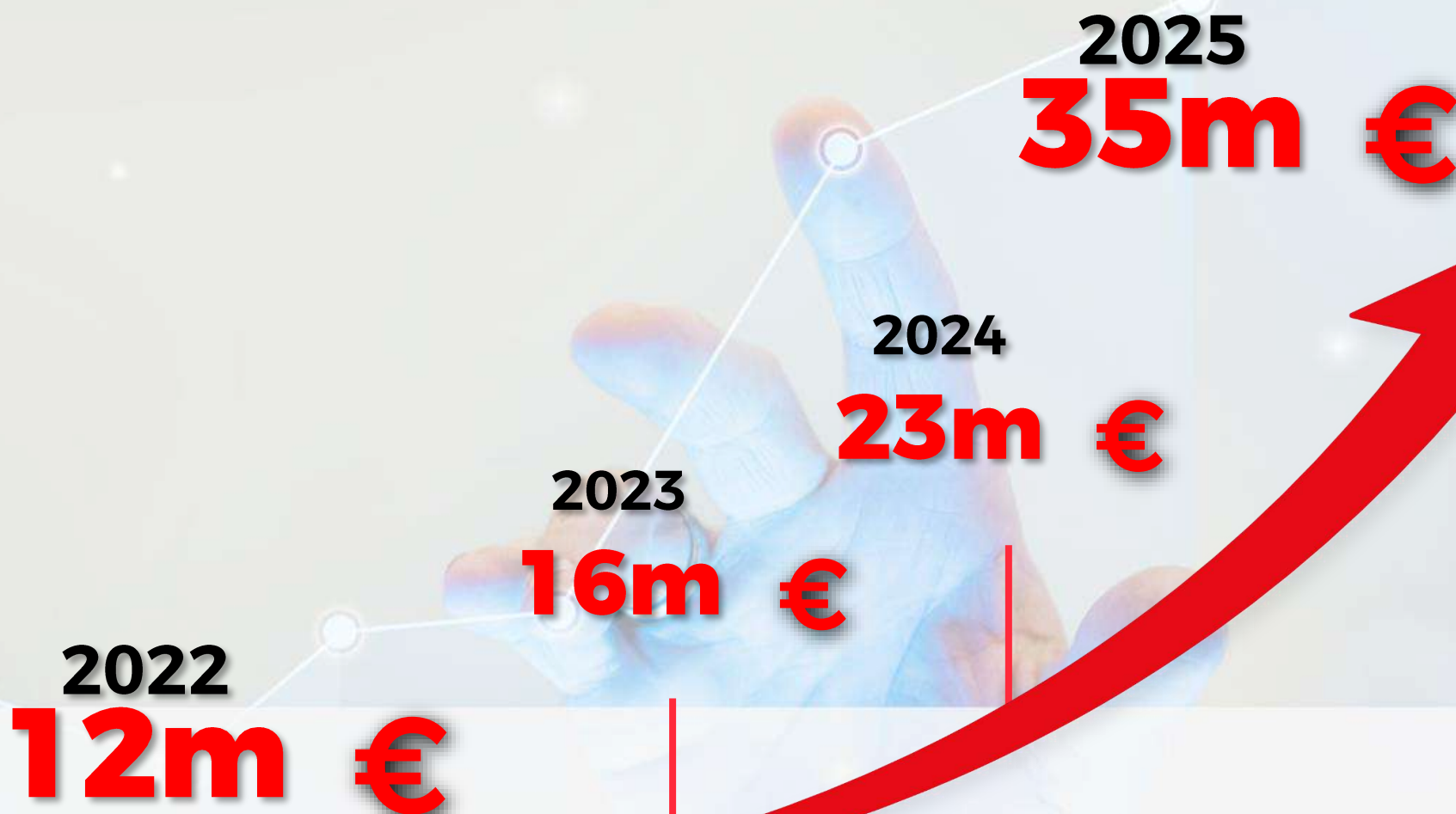
### STRATEGY

## PLAN 2022-2025

### TURNOVER TARGET

23% international level

### EVOLUTION 2022-2025





## 08. CONTACT INFORMATION

### SALES FORCE

#### CEO & FOUNDER



Emilio Sánchez  
**CEO**  
[eescamez@ideaingenieria.es](mailto:eescamez@ideaingenieria.es)



Javier Román  
**MANAGER**  
[jroman@ideaingenieria.es](mailto:jroman@ideaingenieria.es)

#### BUSINESS DEVELOPMENT



Juan Antonio Gutiérrez  
**MANAGER**  
(+34) 660 960 232  
[jagutierrez@ideaingenieria.es](mailto:jagutierrez@ideaingenieria.es)



Emilio José López  
**BID MANAGER**  
(+34) 669 869 246  
[ejlopez@ideaingenieria.es](mailto:ejlopez@ideaingenieria.es)



Enrique Moreno Louis  
**OFFERS MANAGER**  
(+34) 669 845 490  
[emoreno@ideaingenieria.es](mailto:emoreno@ideaingenieria.es)



África Cano  
**COMMUNICATIONS & MARKETING MANAGER**  
(+34) 658 884 895  
[acano@ideaingenieria.es](mailto:acano@ideaingenieria.es)

#### SERVICES

##### PROJECT ENGINEERING



Antonio Rubio  
**MANAGER**  
(+34) 690 019 816  
[arubio@ideaingenieria.es](mailto:arubio@ideaingenieria.es)

EPC –  
Metallic  
structures



Rafael Manzano Aniorte  
**PROJECT COORDINATOR**  
(+34) 673 981 286  
[rmanzano@ideaingenieria.es](mailto:rmanzano@ideaingenieria.es)

##### RECRUITMENT & OUTSOURCING



Rosa Mas  
**MANAGER**  
(+34) 606 407 042  
[rmass@ideaingenieria.es](mailto:rmass@ideaingenieria.es)

##### DISCITAL TRANSFORMATION



Alejandro Cadenas  
**MANAGER**  
(+34) 616615086  
[agcadenas@ideaingenieria.es](mailto:agcadenas@ideaingenieria.es)

##### GRIDS



JUAN EMILIO BERTOMEU  
**MANAGER**  
(+34) 654 911 515  
[jebertomeu@ideaingenieria.es](mailto:jebertomeu@ideaingenieria.es)

##### ARCHITECTURE



Begoña Santos García  
**MANAGER**  
(+34) 691 703 010  
[bsantos@ideaingenieria.es](mailto:bsantos@ideaingenieria.es)



## 08. CONTACT INFORMATION

### OUR OFFICES



ESPAÑA  
SPAIN

MADRID

COMUNIDAD  
VALENCIANA

MURCIA

ANDALUCÍA

## OUR OFFICES ALWAYS CLOSE TO OUR CUSTOMERS



### MADRID

**+34 917 034 404**  
C/ Caleruega 81,  
Edificio Niza 4ªA 28033,  
Madrid



### CARTAGENA

**+34 968 500 805**  
Avda. Luxemburgo S/N.  
Edif. Cartagena Plaza, piso 4, Of.  
6, Pol. Ind. Cabezo Beaza.  
30353, Cartagena, Murcia.



### ALICANTE

Calle Santiago Ramón y Cajal 41 1º  
Local 10-11-12, Parque Empresarial de  
Elche. 03203 Elche, Alicante.



### JAÉN

C/ Esteban Ramírez Martínez nº2,  
2E. 23009, Jaén.



### GRANADA

CL Graham Bell 3,  
2ºA. 18100 Armilla, Granada..



### ALMERÍA

Plaza Dalías, Edificio Celulosa III,  
Planta 1, Oficina 9, 04007, Almería.







**IDEA ADDS YOU**  
WHAT ARE YOU LOOKING FOR?

**CONTACT  
WITH US**

comercial@ideaingenieria.es

ideaingenieria.es

